



Jewelry Travel Case

Skill Level: Intermediate

Designed By
Lisa Ruble
Sewn By
Lisa Ruble



[Lovetocolormyworld.blogspot.com](http://lovetocolormyworld.blogspot.com)



Keep larger necklaces from tangling and everything else (bracelets, earrings, rings) secure in this flat, padded case. It is perfect for packing your favorites when you travel. The entire case zips shut so nothing gets lost. Two layers of Fusible Fleece keep even delicate pieces protected. Sample used Kanvas Palazzo collection, a division of Benartex.

Fabrics Needed

Outside fabric	1 fat quarter
Lining fabric	1 fat quarter
Straps, binding, pocket fabric	50cm

Materials Needed

Legacy L-987 Fusible Fleece White	50cm
66cm (26") Separating zipper	1
28cm (11") Zipper	1
Thread	
19mm (¾") wide Velcro® strips	

Tools Needed

Sewing machine and related supplies
Rotary cutter and related supplies
Iron and ironing board

<http://www.createwithlegacy.com>

Graphic Artist Alexandra Henry
PERMISSION IS GIVEN TO REPRODUCE FOR PERSONAL USE ONLY

Assembly

Step 1. Cutting Instructions.

Outer fabric Cut one 12" x 16" rectangle.

Lining fabric Cut two 8" x 11" rectangles.
Cut one 2" x 11" rectangle.

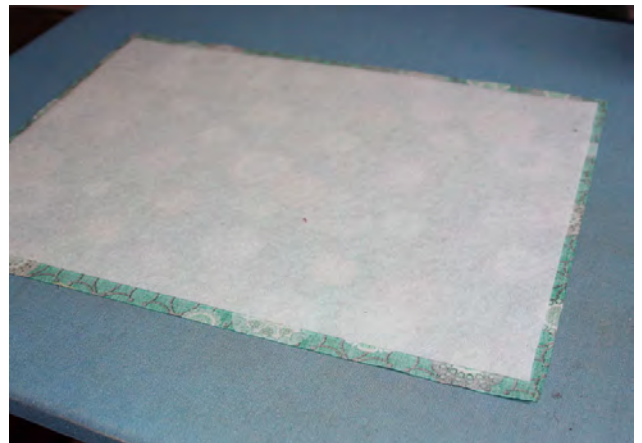
Strap, binding, handle, pocket and zipper tab fabric
Cut one 16" square for binding.
Cut one 11" x 12 rectangle for pocket.
Cut one 4" x 9" rectangle for handle.
Cut two 4" x 7" rectangles for straps.
Cut four 2" squares for zipper tabs.

Fusible Fleece White

Cut one 11 $\frac{3}{4}$ " x 15 $\frac{3}{4}$ " rectangle.
Cut two 7 $\frac{1}{2}$ " x 10 $\frac{3}{4}$ " rectangles.
Cut three 1" x 6" rectangles.

Velcro® Cut six $\frac{3}{4}$ " pieces.

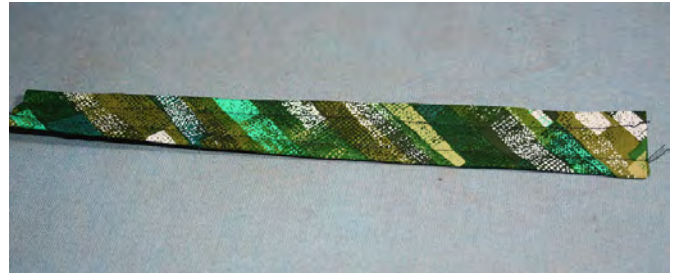
Step 2. Center the fusible side of the 11 $\frac{3}{4}$ " x 15 $\frac{3}{4}$ " rectangle of Fusible Fleece White against the wrong side of the 12" x 16" rectangle of outer fabric. Fuse following manufacturer's instructions. Quilt as desired. Trim to measure 11" x 15".



Step 3. Fold the short ends of the 4" x 9" handle fabric in $\frac{1}{4}$ " with wrong sides together. Fold the piece in half lengthwise with wrong sides together. Press. Open up and fold each long edge in to the center fold. Center one 1" x 6" rectangle of Fusible Fleece White next to the center fold. Fuse following manufacturer's instructions. Refold fabric on fold lines and pin.



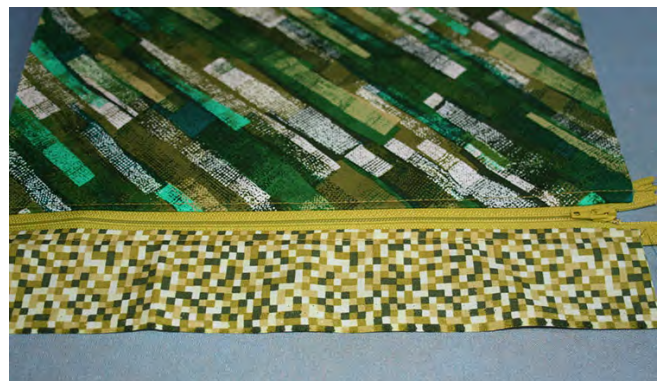
Step 4. Topstitch along both long edges.



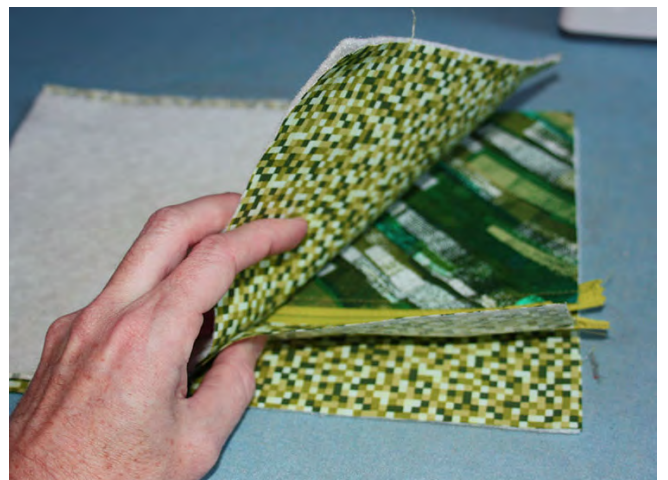
Step 5. Mark the center point of the quilted outer case along both long sides. Fold each short edge of the handle under approximately $\frac{3}{4}$ ". Position the handle along the marked center and topstitch the folded short edges with a boxed 'X'. Handle should also be centered from top to bottom.



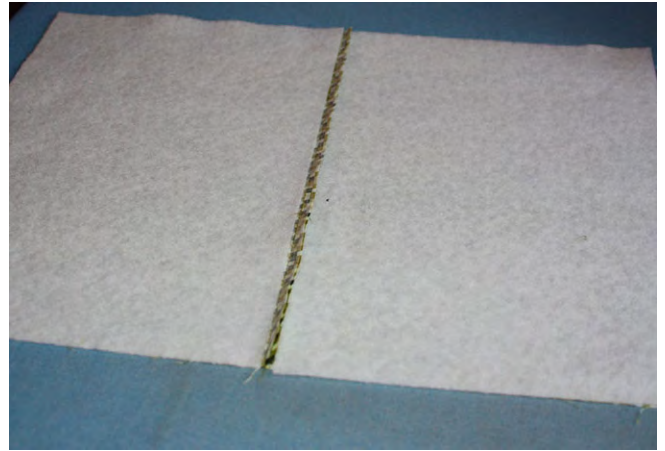
Step 6. To make the lining, press the 11" x 12" rectangle of pocket fabric in half with wrong sides together. It should measure 6" x 11". Sew the folded edge to one side of the 28cm (11") zipper. Topstitch along the edge. Sew the opposite side of the zipper to the 2" x 11" rectangle of lining fabric using a $\frac{1}{4}$ " seam allowance. Topstitch along the edge.



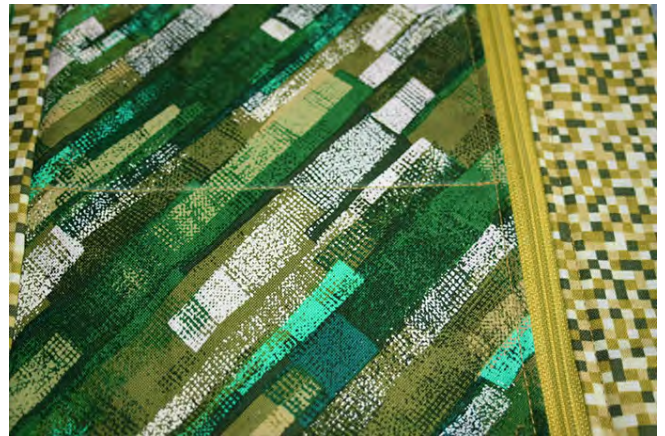
Step 7. Layer this zippered pocket right side up on the right side of one 8" x 11" rectangle of lining fabric. Pin in place. Place the remaining 8" x 11" rectangle of lining fabric on top with right sides facing. Stitch along the long side opposite the zipper using a 6mm ($\frac{1}{4}$ ") seam allowance.



Step 8. Place the fusible sides of the $7\frac{1}{2}$ " x $10\frac{3}{4}$ " rectangles of Fusible Fleece White against the wrong sides of the lining rectangles. The Fusible Fleece White should butt up against the center seam line. Fuse following manufacturer's instructions.



Step 9. Topstitch through the pocket and lining from the zipper to the center seam through all layers.



Step 10. Fold the short ends of one 4" x 7" rectangle of strap fabric in $\frac{1}{4}$ " with wrong sides together. Fold the piece in half lengthwise with wrong sides together and press. Open up and fold each long edge in to the center fold. Position three hook side Velcro® pieces on the right side of the folded strap as shown. The first should be near one end, and the next two even spaced, approximately $1\frac{1}{4}$ " apart. The opposite side will be stitched to the lining. Stitch Velcro® pieces to secure. Repeat with other strap piece.

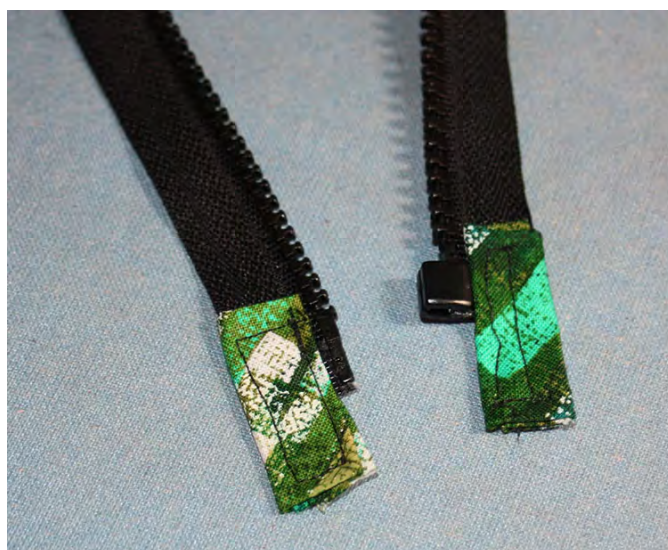


Step 11. Unfold the long side of the strap piece opposite the Velcro® pieces. Place a 1" x 6" rectangle of Fusible Fleece inside against the center fold crease. Fuse following manufacturer's instructions. Refold the strap and topstitch along all edges. Repeat with other strap.

Step 12. Measure 2" down from the top edge of the left lining piece and draw a line. Measure 4" up from the bottom and draw a line. In the same manner, measure 1" in from the left side and ½" from the seam on the right side. Position a strap from Steps 10 and 11, Velcro® side down, so the non-Velcro® end aligns where the horizontal and vertical lines meet. Stitch in place with a boxed 'X'. Repeat with the second strap by the bottom line. Check placement and stitch the loop side of each Velcro® piece to the lining so it aligns with the hook side on the strap.

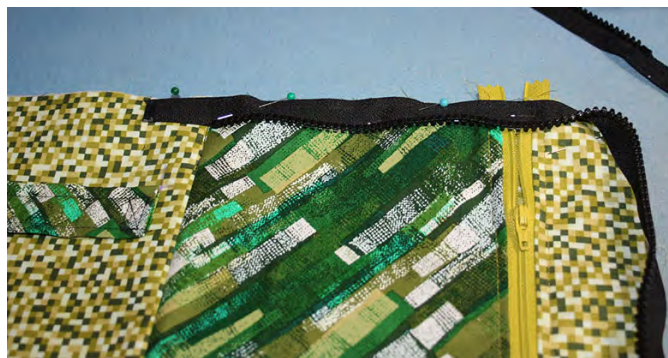


Step 13. To add the tabs on the zippers, fold one 2" square of zipper tab fabric in the same manner as for the straps. Fold around a zipper end, opposite the teeth and topstitch in place. Repeat for the remaining three zipper ends.



Step 14. Place the outer case and lining pieces wrong sides together, aligning raw edges. Pin in place. If desired, stitch in the ditch on the lining side approximately 2", stopping where the hand begins. Using a rounded object, trace curved corners on the outer edges and cut to create rounded corners.

Step 15. Beginning at the top center, line up the tape side of half the zipper with the raw edges of the lining. The zipper stop should be aligned with the center seam of the lining. Use a zipper foot and stitch the zipper to one side of the case through all layers. Curve the zipper at the curved corners. Stop sewing 1/4" before the center seam line at the bottom.



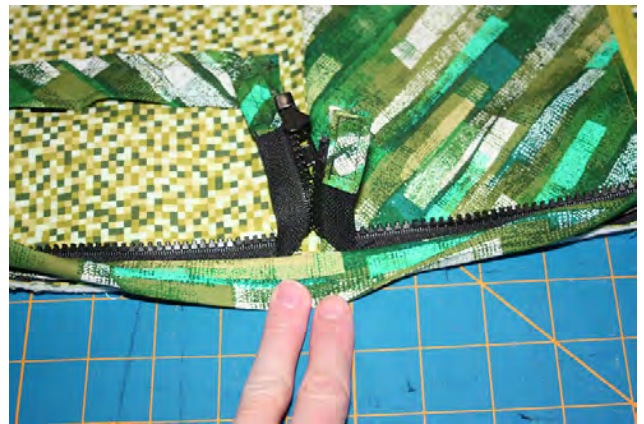
Step 16. Repeat Step 15 with the other half of the zipper and the other side of the case.

NOTE: The zipper foot needs to be placed on the opposite side so stitching can be done from the lining side. Start at the top of the case.

The zipper ends should be aligned. Test for alignment.



Step 17. For the binding, cut 2½" strips from the 16" square of binding fabric. Join the strips together to create a 60" length of binding. Fold binding in half lengthwise with wrong sides together and press. Sew the binding to the case with a 6mm (¼") seam allowance, stitching from the lining side. Fold the zipper ends in to the center to avoid stitching on them.



Step 18. Fold binding to the outside of the case. Hand-stitch the binding down to cover the raw edge.

