

## Modern Girl Clutch

### Skill Level: Intermediate

Designed By  
Whitney Edwards  
Stitched By  
Whitney Edwards



A great clutch for everyday use! Use some specialty fabric to make an elegant bag for that evening out.

#### Fabric Needed

Exterior Fabric  
Lining

Fat quarter  
Fat quarter

#### Materials Needed

Legacy L-987 Fusible Fleece White  
Statement button  
Thread  
3mm elastic

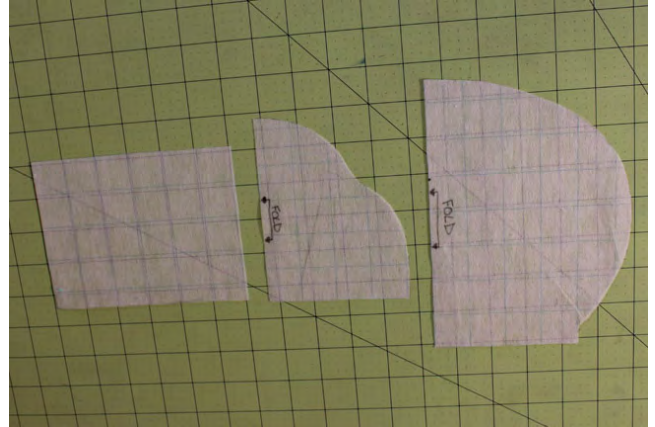
50cm

#### Tools Needed

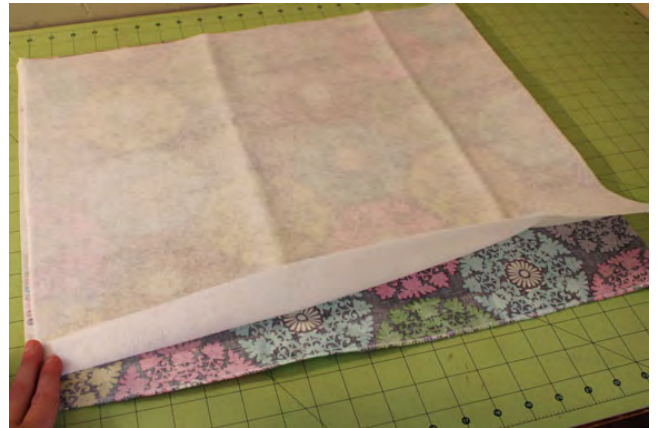
Sewing machine and related supplies  
Iron and Ironing board

# Assembly

Step 1. Print and cut out template pattern pieces.



Step 2. Cut the Fusible Fleece slightly smaller than the outer fabric size.



Step 3. Place the Fusible Fleece down on the wrong side of the outer fabric. Fuse following manufacturer's instructions.



Step 4. Check to make sure all areas are securely fused. Apply extra heat and steam to any area not completely fused.



Step 5. Place pattern pieces on fabric, folding where indicated, pin in place and cut out pieces following instructions on templates.

NOTE: Place pattern pieces selectively if desired.



Step 6. Cut lining pieces.



Step 7. Fold each corner of the pocket in on the wrong side of the fabric and press.





Step 8. Fold and press each side of the pocket toward the wrong side. This will create perfect corners and edges.



Step 9. Sew along one long edge to hem the pocket top.



Step 10. Pin the pocket in the center of one lining piece with the sewn edge at the top.



Step 11. Sew the remaining three sides.



Step 12. Use the body pattern to transfer the button placement marking onto the outer piece which will be the bag front.



Step 13. Sew a button on top of the mark.

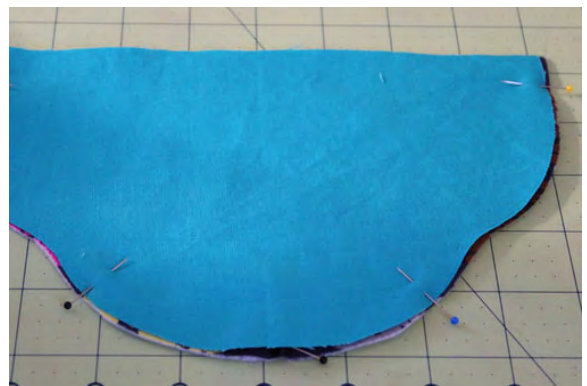


Step 14. Cut a piece of elastic to 2½" in length.

Fold the elastic in half and pin to the center curve of the outer flap piece with the cut edges lined up with the fabric edge.



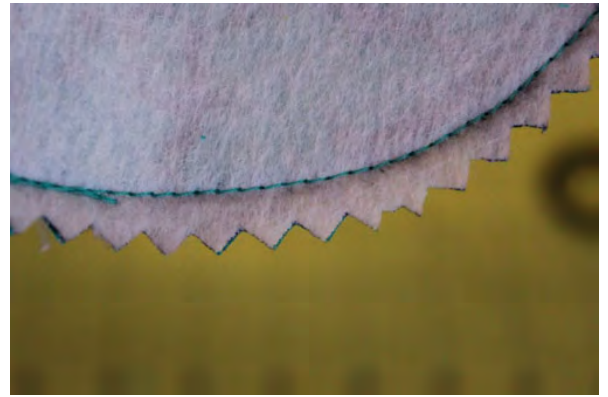
Step 15. Place the lining flap piece and the outer flap piece right sides together and pin along the edges.



Step 16. Sew with a  $\frac{1}{2}$ " seam allowance along the curved edge, leaving the straight edge unsewn.

Optional: Draw the seam allowance onto the fabric with a pencil. Sew on pencil line.

Step 17. Clip the seam allowance or trim with pinking shears then turn right side out. Press.



Step 18. Top stitch all the way around.



Step 19. Place the two outer fabric body pieces right sides together and pin. Sew along the curved sides with a  $\frac{1}{2}$ " seam allowance. Turn right side out and press.

Repeat with the lining body pieces.

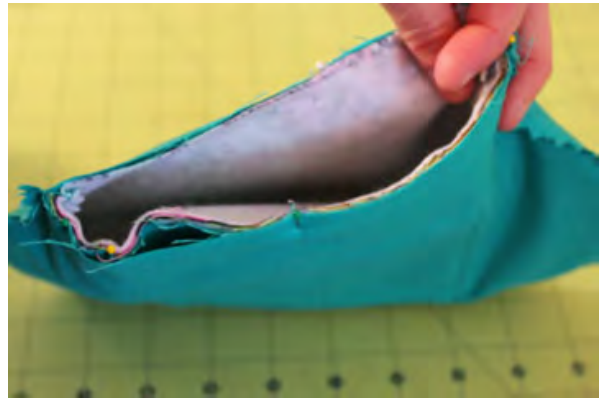


Step 20. Line the flap straight edge with the outer body back straight edge, right sides together and pin.





Step 21. Place outer bag into the lining right sides together. Line up all sides and seams. Pin around the opening.



Step 22. Sew around the opening with a 1/2" seam allowance leaving a 3" gap unsewn in the front center.



Step 23. Turn the entire bag right side out through the unsewn gap.

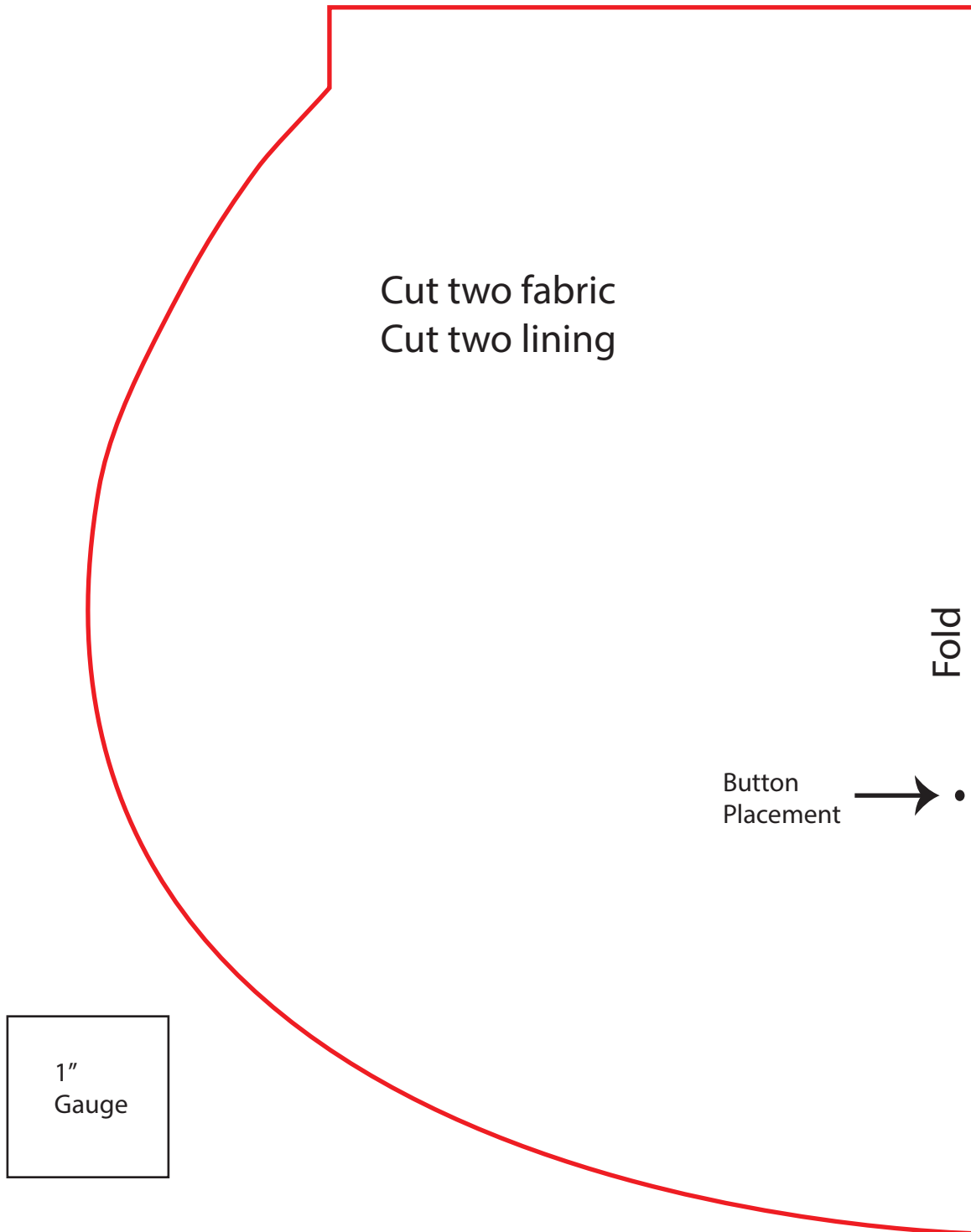


Step 24. Press entire bag. Topstitch around the opening to close the gap and finish the clutch.



## Clutch Main Body Template

Set printer to 100%, actual size.





Set printer to 100%, actual size.

## Clutch Flap Template and Clutch Pocket Template

Flap Template  
Cut one fabric  
Cut one lining

Fold

Pocket  
6" x 4½"  
Cut one main fabric

1"  
Gauge