

## Fylerion Bag

Skill level: Intermediate

Designed By

Sara Lawson

Made by

Sara Lawson

[www.sewsweetness.com](http://www.sewsweetness.com)



### Fabric Needed

Exterior	50cm
Lining and Accent	50cm
Pockets	25cm

### Materials Needed

Legacy L-SF101 Cotton Woven Fusible	3.5m
Legacy L-971 Extra Loft Fusible Fleece	1m
12.7mm (½") magnetic snap	
Thread	
Glue stick	
Fabric marker	

### Tools Needed

Sewing Machine and related supplies  
Ruler  
Iron  
Pressing Cloth

# Assembly

All seam allowances are ½" unless otherwise noted.

## Step 1. Cutting instructions.

Side panel	Cut one 3½" x 35" rectangle exterior fabric. Cut one 3½" x 35" rectangle lining. Cut two 3½" x 35" Cotton Woven Fusible.
Strap	Cut one one 4" x 30" rectangle exterior Cut one 4" x 30" rectangle Cotton Woven Fusible.
Strap Insert	Cut one 30" x 1" strip Extra Loft Fusible Fleece.
Pocket	Cut four 6½" x 10" rectangles pocket fabric. Cut four 6½" x 10" rectangles Cotton Woven Fusible.
Template pieces	Cut pieces following instructions on the template pages.
Cut two 1½" squares of Extra Loft Fusible Fleece for the magnetic snaps.	

## Step 2. Fusing instructions.

Fuse the Cotton Woven Fusible strap rectangle to the strap fabric, following manufacturer's instructions.  
Fuse the Cotton Woven Fusible exterior and lining main panels, exterior and lining side panels to the corresponding pieces, following manufacturer's instructions.  
Fuse the Cotton Woven Fusible accent, flap and pocket pieces to the corresponding pieces.  
Fuse the Extra Loft Fusible Fleece to the Cotton Woven Fusible already fused on the side panels, following manufacturer's instructions.

## Straps

Step 3. On both long sides of the strap, place a mark ½" from the edge.

Step 4. Fold strap in half lengthwise, wrong sides together and press.

Step 5. Open strap back up and with the wrong side of the strap facing up, press in both long edges.

Step 6. Press fabric in half enclosing the raw edges.

Step 7. Place the strap insert in the strap aligning against one side. Fuse strap insert into place, following manufacturer's instructions.

Step 8. Topstitch ⅛" from both edges.

Step 9. Using one flap piece and one of the Extra Loft Fusible Fleece squares, place marks of the prong placement with a fabric marker in the center of the Extra Loft Fusible Fleece. Use the prongs of the smaller part of the snap (with the raised center). Cut small slits at the marks.



Step 10. Make a mark that is centered on the flap and 1½" up from the bottom of the flap. With the prongs of the end of the snap in the middle of the mark, mark the prong placement with a fabric marker. Cut small slits at the marks.

Step 11. Slide the prongs of the snap through the right side of the flap. Place the Extra Loft Fusible Fleece and then the washer over the prongs. Close prongs outward, make sure they lie flat.

HINT: Put a dab of Fray Check on the slits to help the fabric hold up better under the stress of the magnetic snap.

Step 12. Place both flap pieces right sides together. Sew from the straight corner around the flap. Do not sew the straight edge.



Trim seam allowance to ¼". Clip the curves.

Step 13. Turn the flap right sides out. Push out the curves smoothly. Press. Topstitch ⅛" from the edge.



Step 14. Baste  $\frac{1}{4}$ " in from the curved edge of both accent pieces for the main panel.



Step 15. Turn in on basted edge and press.



Step 16. Press the two exterior main panels in half. Press the accent pieces in half.



Step 17. Use the glue stick and glue one accent piece to one exterior main panel. Align the raw edges and pressed creases. Repeat with other accent piece and exterior main panel.

Step 18. Topstitch the accent piece to the exterior main panel  $\frac{1}{8}$ " from the curved edge. Press thoroughly. Repeat with the other main panel.



## Assembling the Bag and Lining

Step 19. Fold the exterior side panel in half on the short edge. On the long sides, make a mark 9" from the short raw edges. Make a mark on the short edge  $\frac{3}{4}$ " in from both long sides.

Do this for both ends of the side panels.

Repeat this step for the lining side panels.



Step 20. Cut along the lines on both ends for both the exterior and the lining side panels.

Set the lining side panels aside for now.



## Sewing the Side Panels to the Main Panels

Step 21. Place the exterior side panel and one of the exterior main panels right sides together aligning the edges. Pin the edges together, easing the curves.

Step 22. Sew the pinned edge. Clip the curved edge every  $\frac{1}{2}$ ". Press seam open.



Step 23. Repeat this step with other exterior main panel to the other side of the side panel.



Step 24. Baste one end of the strap to the top of one side panel. Pin the other end to the other side of the bag. Check the bag for strap length and adjust to taste. Once length is settled, baste the remaining end to the other side of the bag side panel.



Step 25. Center the flap on one exterior main panels aligning the raw edges. Snap should be facing out. Baste the flap in place.



## Sewing the Pockets

Step 26. Place two pocket pieces right sides together. Start sewing 3" from one corner. Stitch around pocket until 3" past last corner. Trim the corners. Repeat for other pocket.

Step 27. Turn pocket right sides out. Use a turning tool to gently poke out the corners. Press the unfinished edge in  $\frac{1}{2}$ " on both sides.

Step 28. Topstitch  $\frac{1}{4}$ " in from edge on side sewn in previous step. Do not sew the open side. Repeat for other pocket.

Step 29. Fold interior main panels in half and press a crease in the fold line. Fold pockets in half and press a crease. Place pocket bottom 2" up from the bottom of the main panel, aligning centers. The open side of the pocket should be at the bottom. Pin both pockets in place.

Step 30. Sew pocket to lining using a  $\frac{1}{4}$ " seam allowance. Leave top open. Repeat for other pocket and lining panel.



## Sewing Lining Main Panels and Side Panel

Step 31. Place the lining side panel and one lining main panel right sides together, aligning raw edge. Pin. Sew using a  $\frac{5}{8}$ " seam allowance. Repeat for other lining main panel and remaining seam on the side panel, but leave a 6" opening in the bottom of the bag for turning the bag later.



Step 32. Use the remaining square of Extra Loft Fusible Fleece and the other half of the magnetic snap. With the prongs of the end of the snap in the middle of the Extra Loft Fusible Fleece mark the prong placement with a fabric marker. Cut small slits at the marks.

Step 33. Make a mark on the exterior main panel of the bag, on the side that is opposite the side where the flap is basted. Center the mark on the bag,  $3\frac{1}{4}$ " from the top edge.



Step 34. Push the prongs of the snap through the right side of the exterior main panel, then place the scrap of Thermolam® on top of the prongs (on the wrong side of the exterior), followed by the washer. Open the prongs away from each other to lie flat.

Step 35. Place the exterior of the bag inside the lining of the bag, right sides together. Push the strap and flap between the layers.

Step 36. Pin, matching side seams. Sew along the top edge.

Step 37. Turn bag right side out through the opening in the lining.

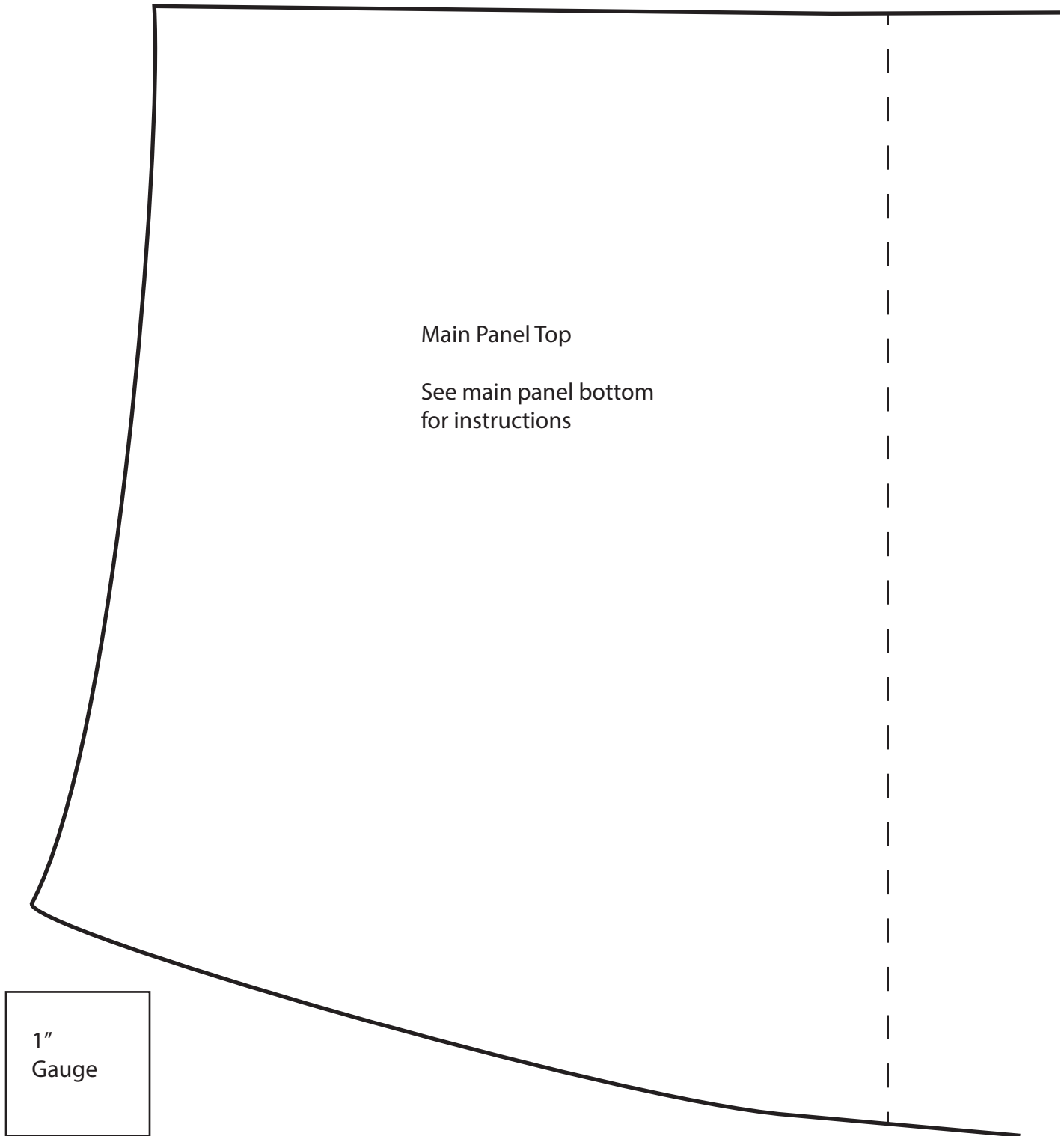
Step 38. Sew the opening in the lining closed.

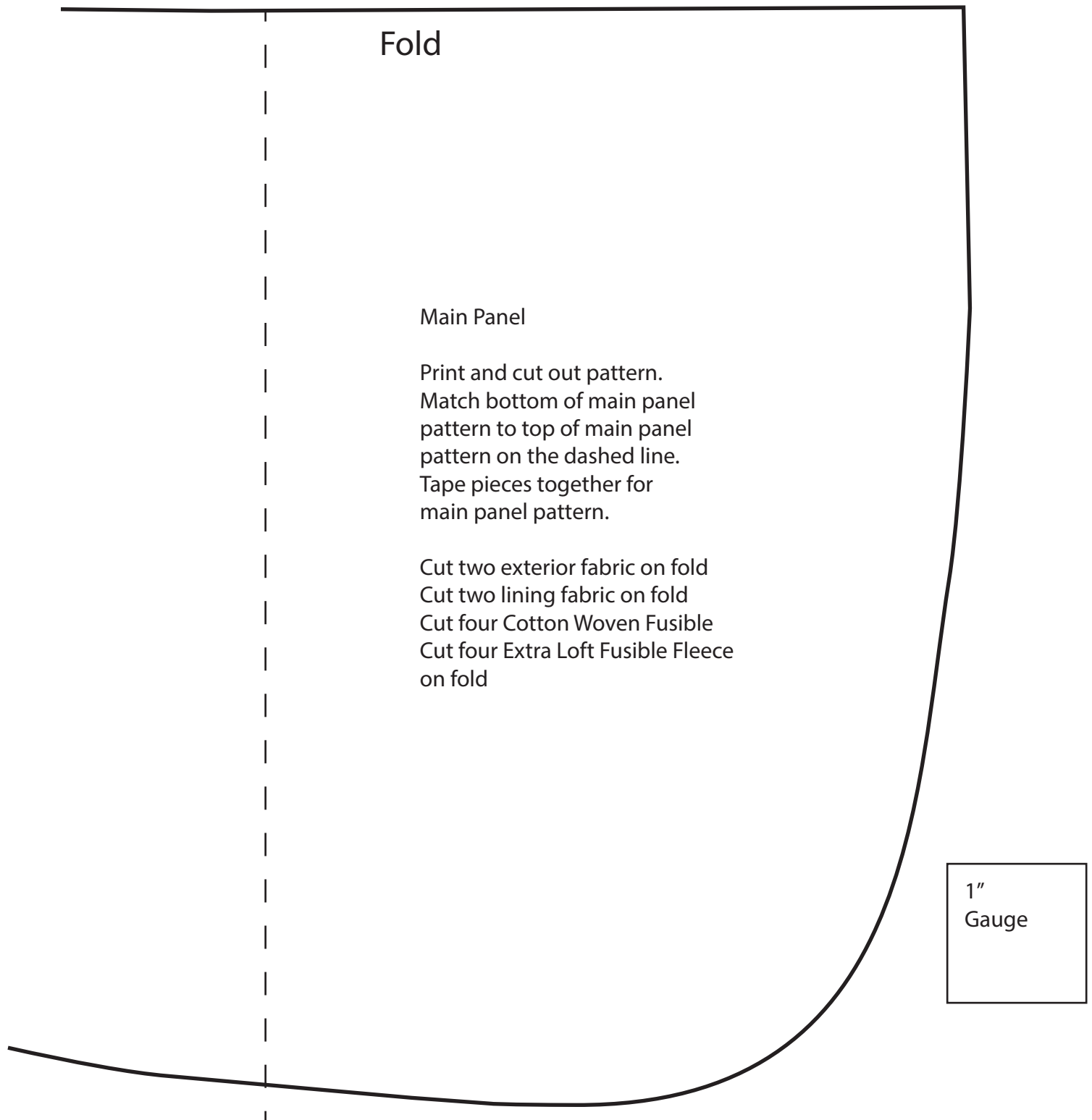
Step 39. Press well.



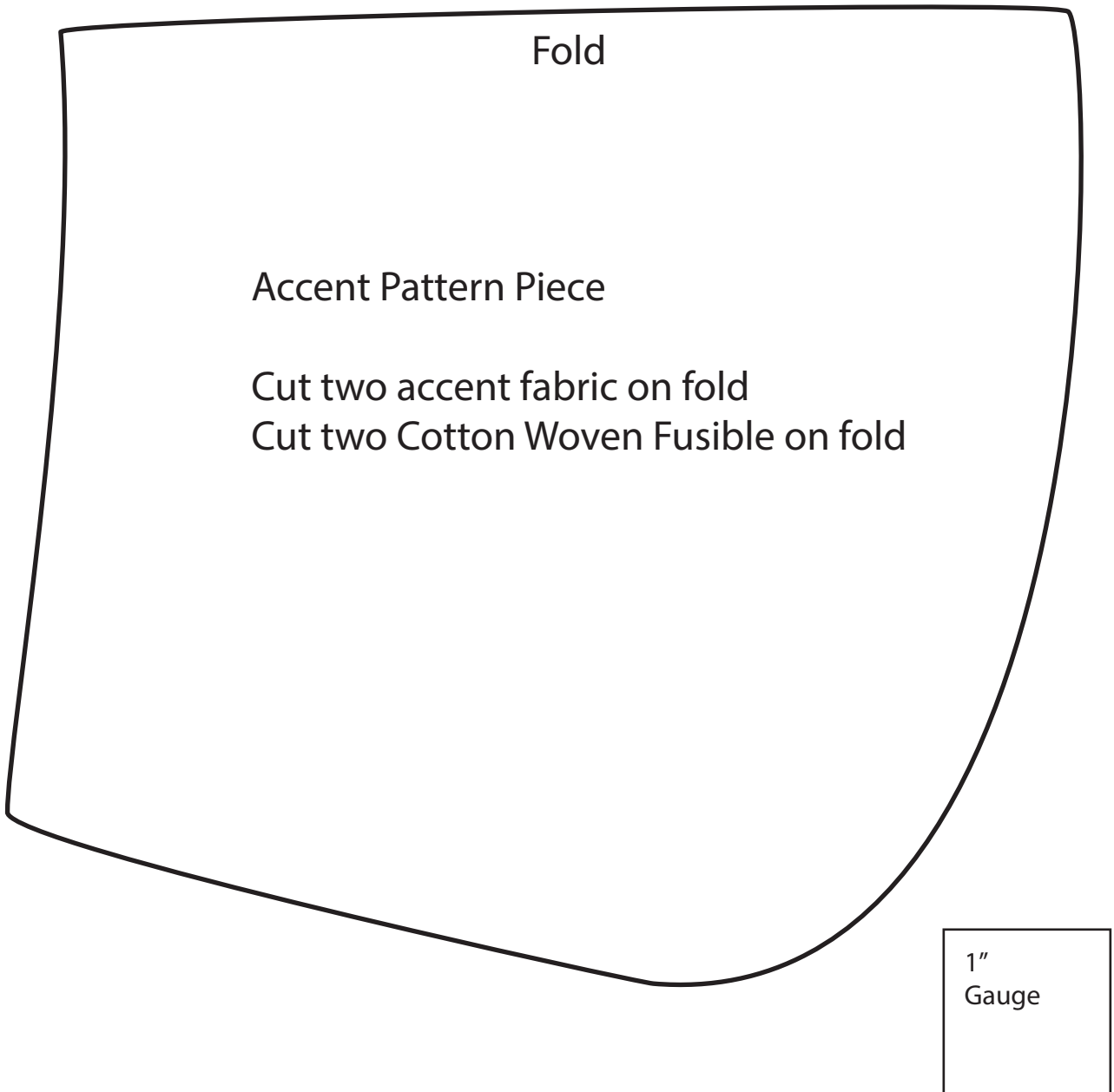
# Fylerion Bag Main Panel Top Template

Set printer to 100%, actual size. Check gauge.





## Accent Template



## Flap Template

1"  
Gauge

Flap  
Cut two exterior fabric  
Cut two Cotton Woven Fusible